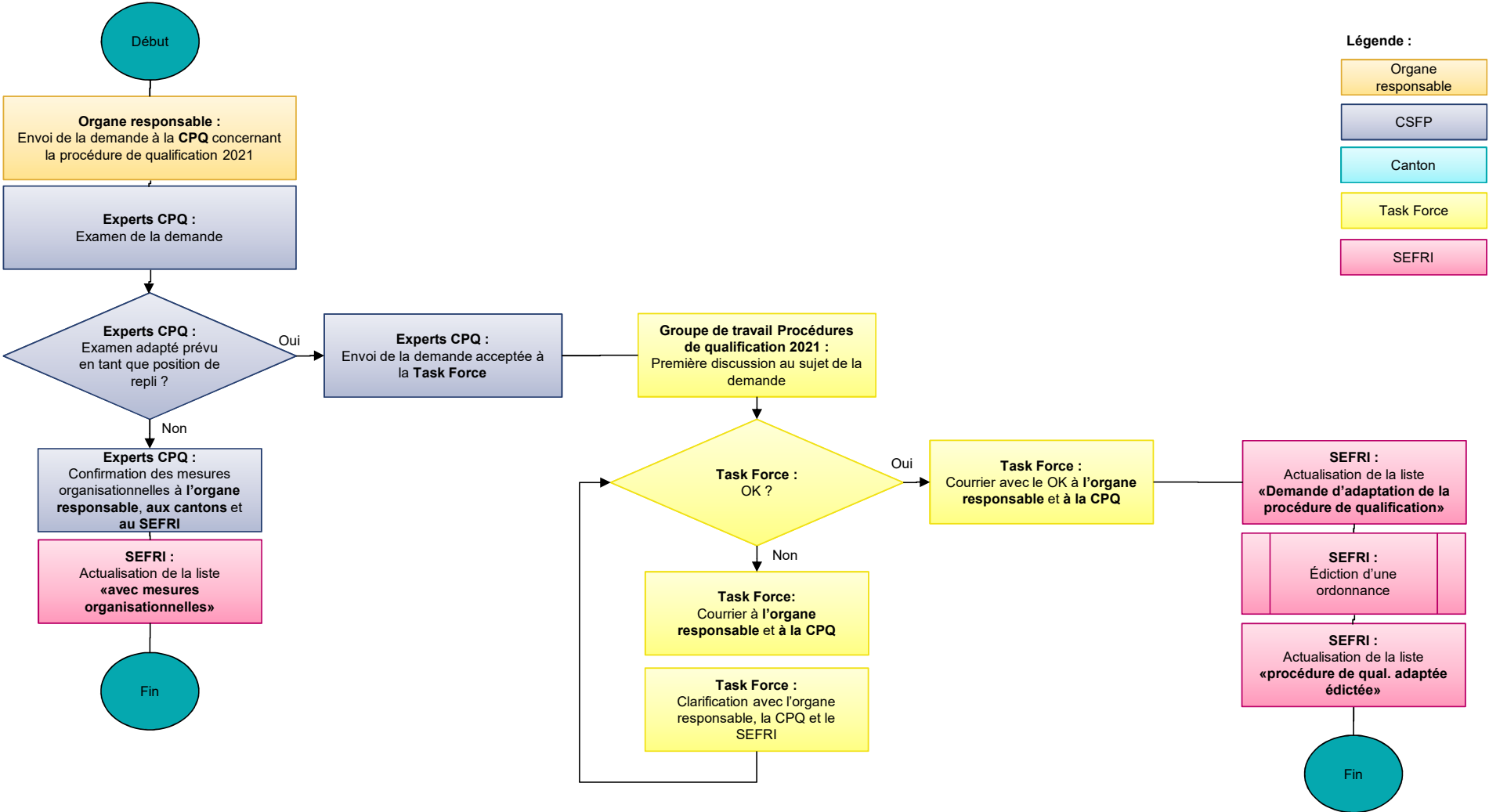


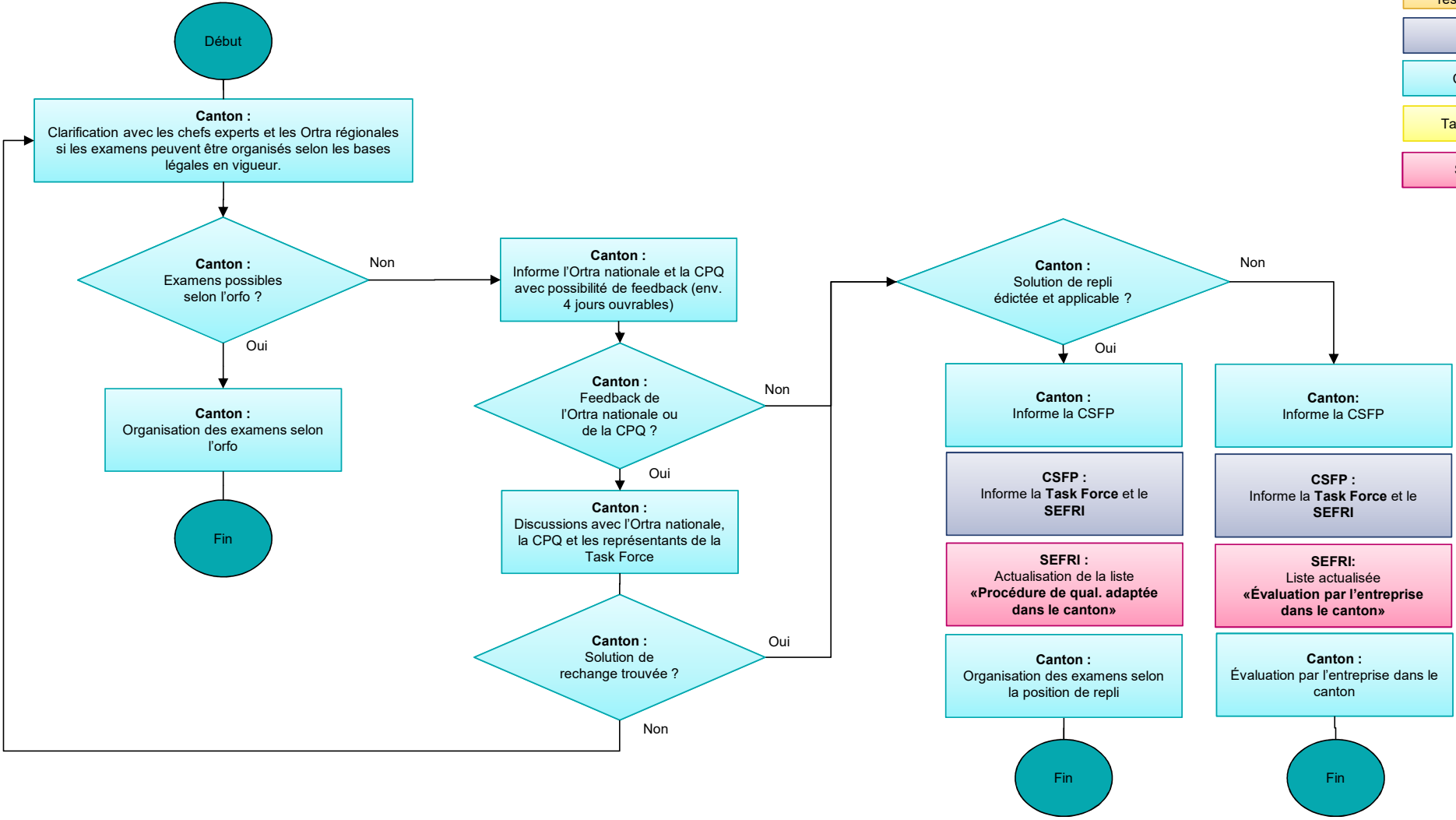
# Adaptation des modalités d'évaluation du travail pratique en tant que solution de repli – évaluation et édiction



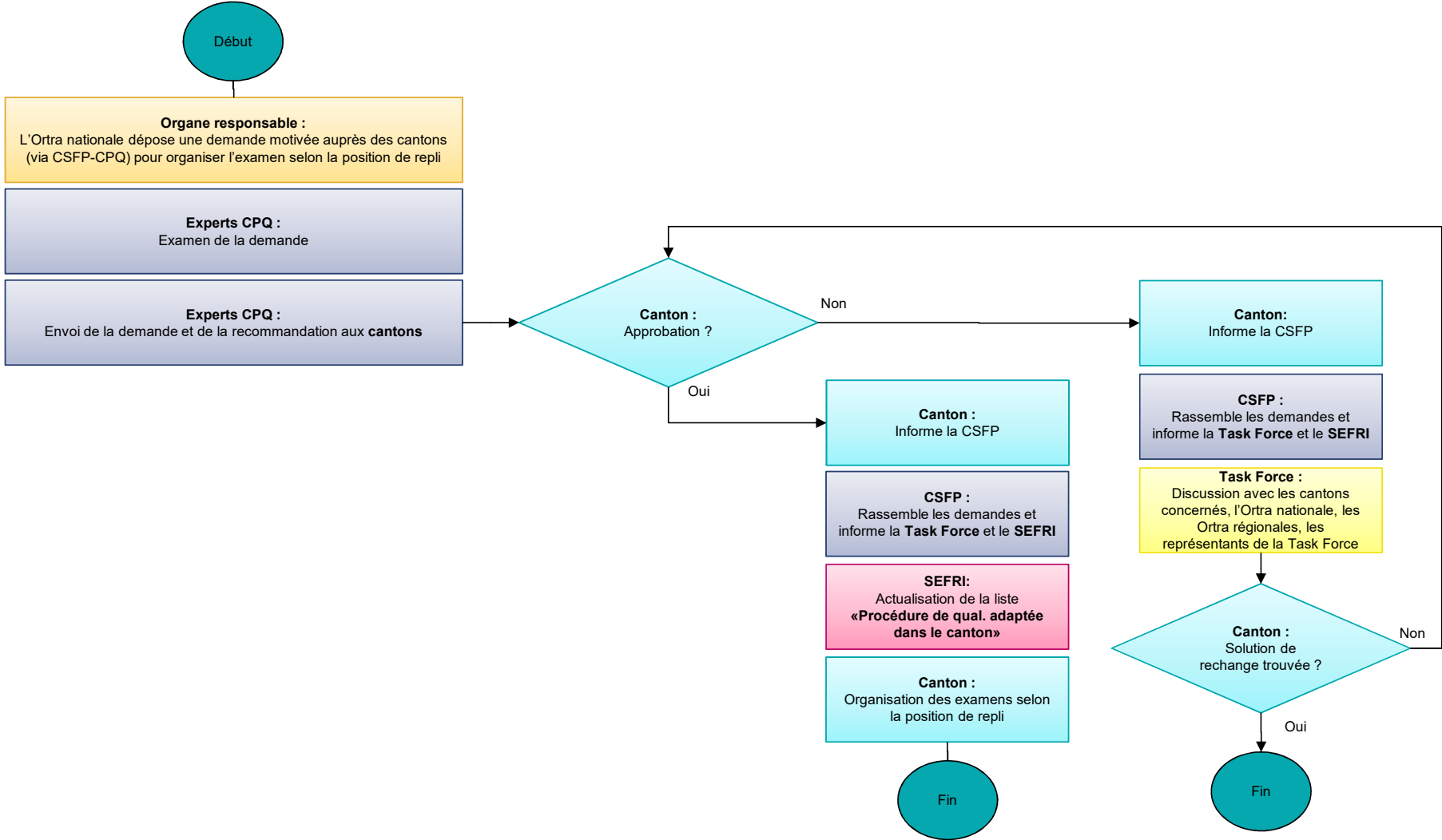
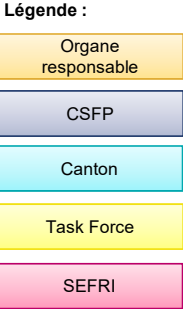
# Organisation du travail pratique (canton)

**Légende :**

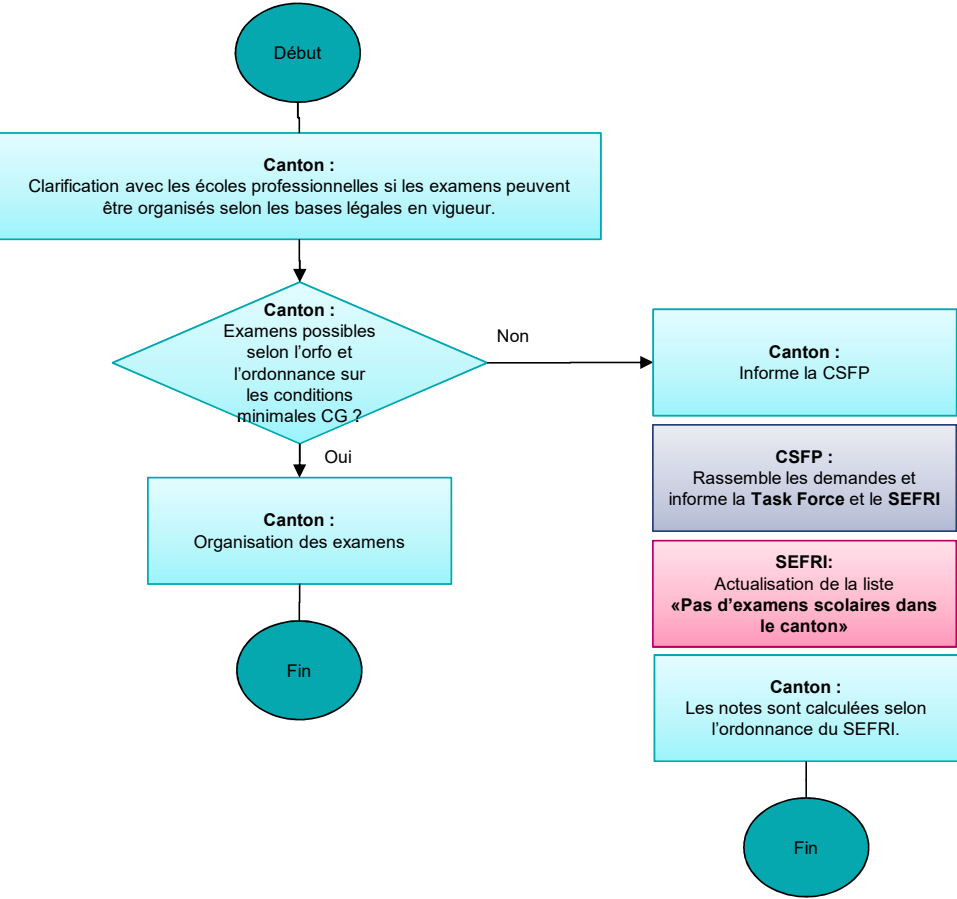
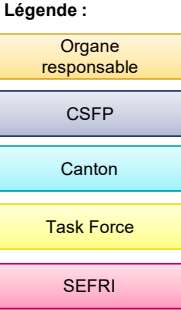
- Organe responsable
- CSFP
- Canton
- Task Force
- SEFRI



# Organisation du travail pratique (organe responsable)



# Examens scolaires dans la formation professionnelle initiale



# Maturité professionnelle

Légende :

- Organe responsable
- CSFP
- Canton
- Task Force
- SEFRI

